



Quick Guide

Ver. 1
Release date: IX 2022

www.engocontrols.com



Producer:
Engo Controls S.C.
43-200 Pszczyna
3E Górnośląska St.
Poland

Distributor:
QL CONTROLS Sp z o.o. Sp. k.
43-262 Kobilice
4 Rolna St.
Poland

www.engocontrols.com

Introduction

EGATEZB is the main component needed to build a smart home system based on devices that will communicate using the ZigBee 3.0 data transmission protocol.

The gateway collects data from all sensors, thermostats, actuators and other smart home system components connected to it. It is also responsible for the stability of the rules and created scenarios in the ZigBee network, even when temporarily there is no Internet access. That is why ZigBee systems are recommended when operational reliability is important and when you want to make sure that a thermostat, relay or opening sensor will work when there is no Internet access. The EGATEZB universal gateway connects to the Internet (router) via a 2.4GHz WiFi network. The gateway is compatible with the Engo Smart / Tuya Smart applications. It is possible to make connections between ZigBee devices and Wi-Fi devices (they must be compatible with same applications) and create mutual scenarios.

It should be noted that connected/linked devices communicating in the ZigBee standard will work without Internet access.

Product Compliance

This product complies with the following EU Directives: 2014/30/EU, 2014/35/EU, 2014/53/EU i 2011/65/EU.

Technical specification

Power supply	5V DC micro USB
Communication	ZigBee 3.0 2,4GHz and WiFi 2,4GHz
Dimensions	72 x 72 x 21 mm

EGATEZB installation



Warning!

Connect the EGATEZB universal gateway to a 230V AC power supply, use the supplied plug and USB cable only.

Explanation for LED indicator



LED indicates current status of the device

WiFi and Internet status	Red LED	Green LED	Device status
WiFi ON Internet ON	lights up	lights up	Right after switching the device on or after a factory reset, both LEDs light up for a few seconds
	LED flashes slowly	lights up	Few seconds after turning the device on, the gate is ready for pairing with the application
	lights up	lights up	pairing the gateway to the app (green LED lights up for 2 seconds and goes out)
	lights up	LED is off	Connected to cloud and WiFi
	lights up	LED flashes	The ZigBee network is open - scanning for new devices
WiFi OFF Internet OFF	LED is off	LED is off	No connection to the cloud and wifi or gateway is not connected to power supply
	LED is off	LED flashes	ZigBee network is open - scanning for new devices can be added to the gateway but they will be available in the application after restoring Wifi and Internet connection
WiFi ON Internet OFF	lights up	LED is off	No connection to the Cloud
	lights up	LED flashes	ZigBee network is open - scanning for new devices, devices can be added to the gateway but they will be available in the application after restoring Internet connection
No power supply	LED is off	LED is off	No power supply

Installation of the gateway in the app

Make sure your router is within range of your smartphone. Make sure you are connected to the Internet. This will reduce the pairing time of the device.

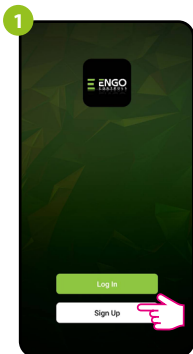
STEP 1 - DOWNLOAD ENGO SMART APP

Download the ENGO Smart app from Google Play or Apple App Store and install it on your smartphone.

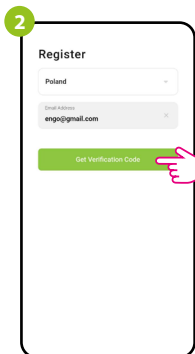


STEP 2 - REGISTER THE NEW ACCOUNT

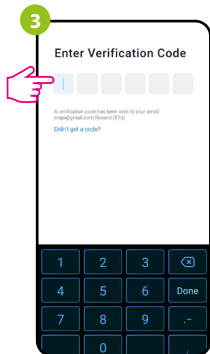
To register a new account, please follow the steps below:



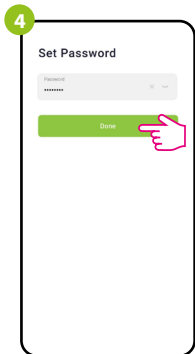
Click „Register“ to create new account.



Enter your e-mail address to which the verification code will be sent.



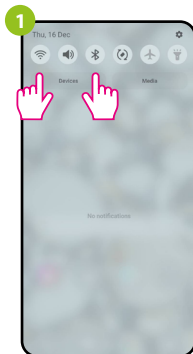
Enter the verification code received in the email. Remember that you only have 60 seconds to enter the code!



Then set the login password.

STEP 3 - CONNECT THE GATEWAY TO WI-FI

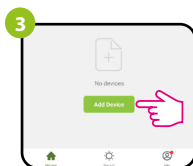
After installing the app and creating an account:



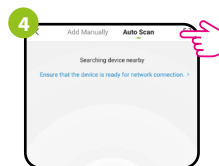
Turn on Wi-Fi and Bluetooth on your smartphone. It's best to connect mobile to the Wi-Fi network to which you want to assign the device.



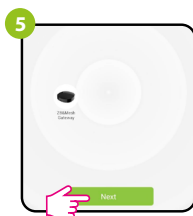
Make sure the gateway is powered on. Using the PIN included, press and hold the RESET button for 8 seconds until LEDs start lighting up. The pairing mode is enabled.



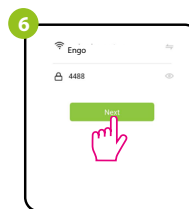
In the app, select: „Add Device“.



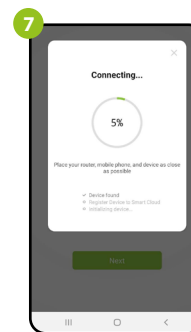
Then choose: „Auto Scan“.



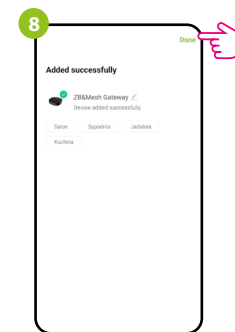
After finding the gateway, go „Next“.



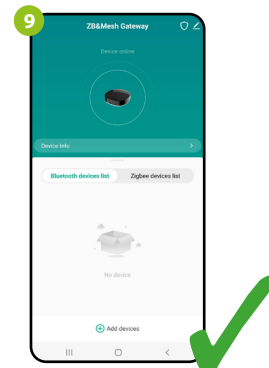
Select the Wi-Fi network in which the gateway will operate and enter the password of this network.



Wait for the app to configure the gateway with the selected Wi-Fi network.



Name the device and click „Done“.



The gateway has been installed and displays the main interface.

Reset the gateway

To restore the default settings of the device, press RESET button and hold it for about 8 seconds - until both LEDs light up. The Universal Internet Gateway will then reset to the default (factory) settings and the pairing process will begin.